

# TR48 VSC

BEØCOM S.r.L Via Sardegna 1  
Villa Carcina 25069 BS ITALY  
Tel. +39 030 8982917 Fax. +39 030 8981074  
P.IVA 02634300988  
www.twinsnet.com



Strong and stable machine frame automatically loaded by Robot, pallet and feeders (available also Human loading).



Flexible pallet line to join the cam group, satellite machine with the main assembly machine.

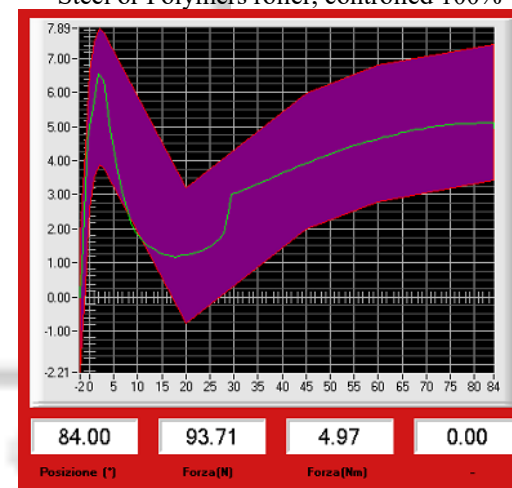
Assembly and testing machine for oven hinges, mass production.

- Production rate 1.000 part/hour.
- One workers just to load hook.
- Full assembly and control.
- Controlled CNC rivetting.
- Full stroke torque angle test.
- Vision control of components.
- Electronic control of assembly.
- Can be equipped for different models
- Quick changeover.
- 23" touch HMI multi languages.
- Assisted setup by image sequences.
- Automatic calibration of leak.

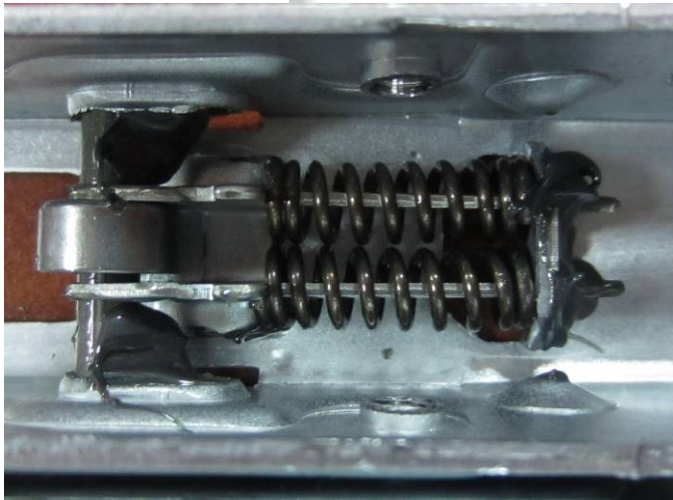


Full automatic assembly, quick change over, several models included triple rivets hinges and single spring fork. Steel or Polymers roller, controlled 100%

The working sequence can be programmed directly in the machine CNC, including also manually operations driven by the CNC. The working time of the units can be also programmed as a part of the sequence. All the production data are continuously saved in the machine memory or directly in your network, in order to allow a real time process traceability. The working time and the stop or setup time are also saved in order to allow an efficiency survey, much more than a simple OEE. Calibration data are stored too, in a separate file and managed form a dedicated scheduler.



100% Final testing with profiled torque tolerance. .



Volumetric and precise greasing with camera control for the grease presence.  
Grease barrel of 200Kg.

The machine can assembly also single spring forks.



USB and NETWORK.



Code Reader



Smart info

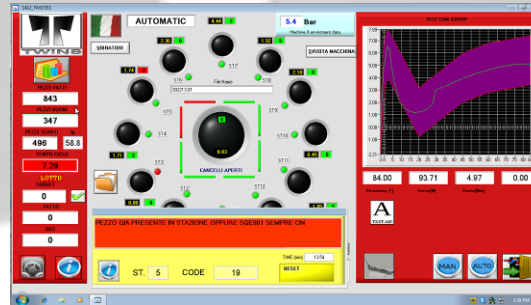


INDUSTRY 4.0

Process traceability trough bar or Q code (Data-matrix) .  
Automatic upload of the working programs  
Continuous storage of the process data.  
Remote service available on all the machine components.

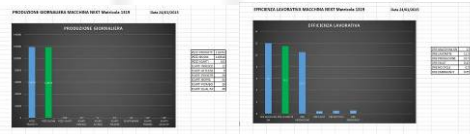
## MACHINE HMI & DIAGNOSTIC

All the machine fault are immediately displayed on the monitor with a clear description and a picture or a sketch that show the area of the machine where the fault happened.



## EFFICIENCY

Sometime may happen that also the most performing machine don't give the forecasted production of the day, the understand of what happened is not easy because involve also the people who work on the machine, like who have to refill the feeder or who have to fix and reset the machine after a fault.



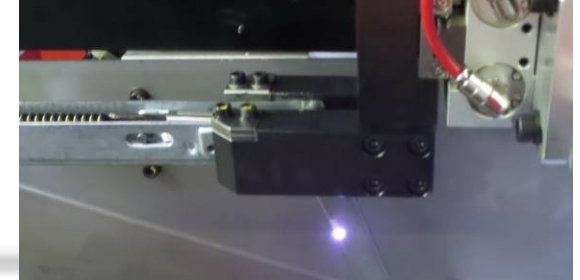
A couple of tables show to the operator the production shared from pieces right and pieces wrong with the causality of the wrong with its own totals. The second table show the total of the hours of the machine on line, the total of the work hours, and the dead hours with the causality.



Spring test & loading with pre-compression 100%



CNC test & stretch 100% in the load of the arm spring.



Laser marking with progressive code for 100% traceability.